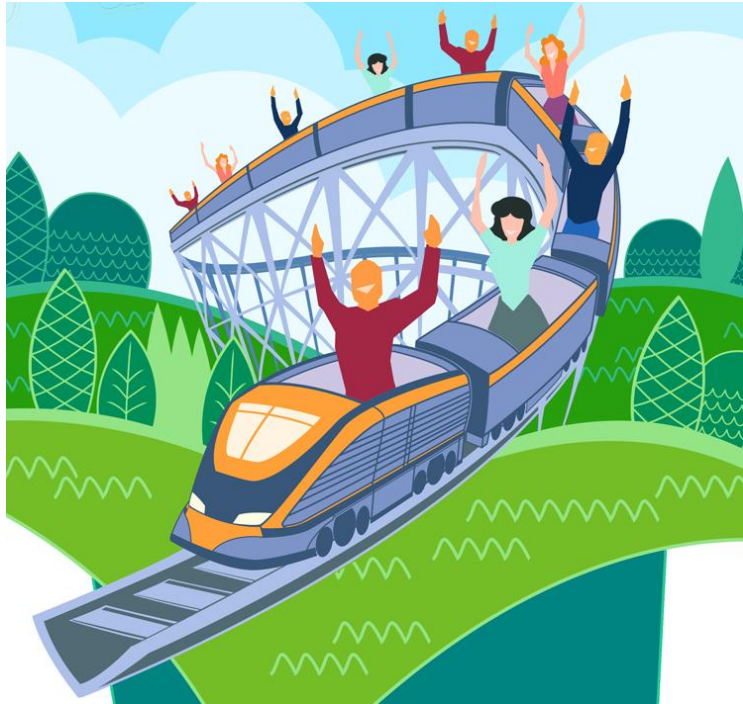


# THEME PARK REVIEW

Presents...



## Italy & Europe 2012 Trips!

Italy:

June 16 – June 23, 2012

Europe:

June 23 – July 1, 2012

Join TPR for our Italy Trip, Europe Trip, or BOTH!

Optional Bonus Italy Parks Add On offered before the Italy Trip!

Details below...



### TPR's 2012 "Italy" Trip includes:

- Ground Transportation via luxury coach. Airport transfers will be included depending on your arrival/departure time and date. Tour starts at Rome Airport (FCO) and ends at Milan Airport (MXP).
- 7 Nights of Lodging from Saturday Night 6/16/12 through Friday Night 6/22/12, including a multi-night stay at the Gardaland Resort
- All Theme Park Admissions - **At least 7 Parks!** (See below for list)
- At least two meals per day plus snacks & drinks
- Group Photo, Tour Shirt, & Trip Photo CD
- Exclusive Ride Time, Walk Backs, Photo Ops, Q&A's, Flashpass or other 'Virtual Line Systems'
- Access to Exclusive Message board on TPR to discuss trip specifics and questions that may arise.

You will ride **OVER 25 ROLLER COASTERS** on this trip!

Including the Wing Rider at Gardaland, the awesome combo of Katun & iSpeed at Mirabilandia, the new X-Car at Rainbow Magicland and more!

### TPR's 2012 "Europe" Trip includes:

- Ground Transportation via luxury coach. Airport transfers will be included depending on your arrival/departure time and date. Tour starts at Milan Airport (MXP) and ends in Paris near CDG Airport.
- 8 Nights of Lodging from Saturday Night 6/23/12 through Saturday night 6/30/12 at several park resort hotels
- All Theme Park Admissions - **At least 8 Parks!** (See below for list)
- At least two meals per day plus snacks & drinks
- Group Photo, Tour Shirt, & Trip Photo CD
- Exclusive Ride Time, Walk Backs, Photo Ops, Q&A's, Flashpass or other 'Virtual Line Systems'
- Access to Exclusive Message board on TPR to discuss trip specifics and questions that may arise.

You will ride **OVER 40 ROLLER COASTERS** on this trip!

Including the new GCI Woodie at Europa, Expedition Ge Force, Krake at Heide, the new B&M Invert at Parc Asterix, and much more!

### Parks Included:

**Italy** – Gardaland, Mirabilandia, Rainbow MagicLand, Movieland Studios, Aqua Studios, Fiabilandia, plus bonus Rome area small parks!

**Europe** – Parc Asterix, Europa Park, Heide Park, Holiday Park, Movie Park Germany, Walygator, plus at least two more based on final itinerary and new ride announcements!

\*\*Note – Final Itinerary, ERT, Group Meals and a schedule of other details will be available much closer to the trip.

### Total Cost:

**Italy - \$1899 Per Person Club TPR Member, \$1950 Per Person Non-Club TPR Member**

**Europe - \$2095 Per Person Club TPR Member, \$2150 Per Person Non-Club TPR Member**

**BOTH - \$3899 (Nearly a \$100 savings!) Per Person Club TPR Member, \$4100 Per Person Non-Club TPR Member**

The total cost of the trip includes everything listed above. Airfare to get to/from the starting and ending points is NOT included. You are also responsible for getting to/from the airport/hotel if your flight does not come in at the specified times for the transfer. Total cost amount is based on double occupancy. If you are attending the trip on your own, you will be paired with another trip participant. If you wish to room on your own, please inquire about the additional single supplement fee.

**ITALY BONUS** – We are offering a pre-Italy Trip add on to three additional Italy Parks; Fasanolandia, Miragica and one additional small park. Final cost will be based on total number of participants and be announced in a few months once signups are complete. This add on will include two additional nights of hotel, park admissions, ground transportation and more. Specific flights will need to be booked on your own; we will help you with this.

### **Trip Registration and Payments (Initial Deposits)**

To register for either or both trips, please register your initial trip deposit online at the TPR Store: <http://www.themeparkreview.com/store/> and click on the 2012 Trips Deposit link.

You may pay either via PayPal, Check, Money Order, or Bank Wire Transfer.

For PayPal payments, the TPR Store will direct you immediately to PayPal to make Payment.

For check/money order payments, the TPR Store will send you an email that you will print out and mail in along with your payment.

If you would like to make payment via Bank Wire Transfer, select the “Check/Money Order” payment option. When you have completed your transaction, please send an email to [elissa@themeparkreview.com](mailto:elissa@themeparkreview.com) to set up the Bank Wire Payment.

Trip deposits and payments are as follows:

- \$200 (Italy) and/or \$250 (Europe) Initial Deposit – To secure a spot on either tour, your initial deposit is due NOW!
- \$1000 2<sup>nd</sup> Payment – Due by February 17, 2012
- \$699 (Italy) or \$845 (Europe) Final Payment – Due by April 13, 2012

Your initial deposit is fully refundable should you need to cancel, but only until February 17. After February 17, there are no refunds! We have several participants that use a payment plan or schedule to pay for the trips, if this is something you are interested in, please contact us ASAP so we can setup a TPR Account and Payment Schedule for you!

Questions? Email: [elissa@themeparkreview.com](mailto:elissa@themeparkreview.com)

**\*\*PLEASE NOTE NEW PAYMENT ADDRESS BELOW\*\***

## **FAQ's**

### **Q: What can I expect from a Theme Park Review Trip?**

A: Expect to have a great time with new and old friends, riding tons of great roller coasters, visiting some amazing parks, and even getting some nice perks like ERT, backstage tours, etc. It also means "concierge" type service from help with all of your travel arrangements, luggage tags, drinks/snacks, private message board to discuss details, and much more!

### **Q: How do we meet up at the start of the Trip?**

A: This will all be discussed further once signups are complete. Usually, you just get to the airport and we take care of it from there. Again, all details will be given on the private trip board and the printed color trip guide. We will also let everyone know our flight plans and you are welcome to fly over with us. No one has ever not found us to start the tour!

### **Q: What kind of hotels will we stay at?**

A: Theme Park Review makes the best attempt to stay at "nice" hotels. Meaning interior corridors, hotels with facilities (food, convenience stores, etc.) within walking distance, hotels with a bar or restaurant, etc. On these trips we will also stay at numerous official park resort hotels that are rated four or five stars!

### **Q: What are "park perks?"**

A: The most popular park perk is "ERT/ERS" or "Exclusive Ride Time/Session." The park will allow our group to arrive early or extend our stay outside of the public park hours so we can ride coasters all by ourselves! We may also get backstage tours or photo tours in areas not accessible by the general public.

### **Q: How many people will be on this trip?**

A: Theme Park Review likes to keep our trips as small as possible. There may be as few as 30 people on a tour, and NEVER more than 100. We have seen what happens when a tour books 250 – 300 people. Lines are longer during ERT than during the normal operating day! We do not want that to happen on a TPR tour. We would like to keep these trips at 50 people each.

### **Q: What kind of meals can I expect?**

A: We will always try to stay at hotels that include breakfast. On most days (except for when we have to leave super early) breakfast will be included. There will also be a meal included at a park. That meal may either be a set time for the entire group or you may receive a meal coupon to eat on your own. Sometimes we also have group meals at an offsite or hotel restaurant as well.

### **Q: Do I need to be a member of Theme Park Review or Club TPR to go on a trip?**

A: No. You do not need to be a member to go on a trip, however, once you register, we will create a TPR Forum screen name for you, if you do not have one already. You will have access to the trip forum which will give you up-to-date information. Club TPR Members get priority placement on trips and a discount. Join today at [www.clubtpr.com](http://www.clubtpr.com)

### **Q: I am under 18 years old. Can I still go on a trip?**

A: If you are 16 or 17, you can still go on the trip, BUT your parents must agree to sign a medical release form and a waiver and you must be "approved" by TPR. If you are under 16 years old, you need to be accompanied by a responsible adult.

### **Q: What if English isn't my first language? Is it only Americans on the trips?**

A: Our TPR Trips always have been very diverse, with participants from Asia, Europe, South America, Australia, and of course North America. Our trips are conducted in English, but we do our best to make sure that if English is not your first language you understand what we are saying and feel welcome. On many trips our Europeans will outnumber the Americans!

### **Q: What about Disneyland Paris?**

A: Disneyland Paris is not an official part of either tour. Robb and Elissa WILL be going to Disneyland Paris after the Europe Trip and will be happy to help you arrange your visit. This will be addressed further on the private trip forum. If there are enough people interested we may even do a group character meal!

---

### Terms and Conditions

Your trip fee covers the cost of the following: all transportation detailed in the trip flyer, overnight accommodations, park entrances, all relevant taxes, road tolls, gas, parking, drivers, etc. It does not include any meals apart from those advertised in the itinerary. Theme Park Review will do its best to arrange park perks, but they cannot be guaranteed.

Participants aged 15 and under as of June 16, 2012 (for Italy) or June 23, 2012 (for Europe) must be accompanied by a parent or guardian. Participants aged 16 – 17 will be allowed to travel on their own but must have a signed medical release and waiver from their parent or guardian as well as be personally approved by Theme Park Review.

Note that the pace of the trip will be fairly rigorous, mornings as early as 6am, nights as late as midnight. This will NOT be the case EVERY day, but do be prepared. Most hotels will have full service restaurants.

Due to fluctuating fuel prices as well as currency exchange rates, it may become necessary to charge a small fuel/currency supplement if needed. This will be determined six weeks prior to the start of the trip.

Theme Park Review cannot be held responsible for anyone that misses the start of the trip due to flight delays or any other travel issues. Everyone should plan to arrive in ample time for the start of the tour. Trip participants are also responsible for arriving on time to all scheduled bus departures. The trip WILL depart on time and will not wait for latecomers. If you are late for any meet up, you will be responsible to meet up with the tour at your cost. Ask anyone from previous TPR Trips, if you are 1 minute late WE WILL ALREADY BE GONE! This is how we can make every attempt to stay on schedule. We strongly recommend that you take out your own insurance policy to cover health, third party liability and trip cancellation costs.

The payment of registration fees by, for, or on behalf of participants releases and holds harmless Theme Park Review and its representatives from any and all liabilities related to those activities.

We reserve the right to alter the itinerary for reasons such as operational problems, acts of war, etc. We will try to notify you prior to departure where possible or by announcements during the trip. We will try to offer suitable alternatives where possible. We cannot be held responsible if certain rides or coasters are not open for the trip. If you wish to cancel your place on the trip, then we must receive notice at least 4 weeks prior to departure. Any trip costs incurred on your behalf will be retained up to the value of the deposit. If cancellation notification is received less than 4 weeks prior to departure, any trip costs incurred on your behalf may be retained from your trip payment, and you may be asked to reimburse us if costs incurred exceed what you have paid. Theme Park Review reserves the right to cancel the trip for any reason. In the event of a cancellation any monies paid to Theme Park Review will be refunded.

All participants must be in possession of a full passport that is not due to expire for at least six months after your return to your country of residence. We cannot be held responsible for any problems arising due to insufficient travel documentation. Theme Park Review cannot be deemed liable in respect of any loss, damage, or changes caused by force majeure. This covers such events as floods, strikes, fire, warfare, terrorism, or similar actions beyond our control.

Theme Park Review acts only as an agent for the various independent suppliers that provide hotel accommodations, transportation, sightseeing, amusement parks, or other services connected with this tour. Such services are subject to the terms and conditions of those suppliers. Theme Park Review accepts no liability whatsoever for any injury, damage, loss, accident, delay, or other incident which may be caused by the negligence, defect, default or any company or person in performing these services. Responsibility is not accepted for losses, injury, damages or expenses of any kind due to sickness, weather, strikes, hostilities, wars, terrorist acts, acts of nature, local laws or other such causes. All services and accommodations are subject to the laws and regulations of the country in which they are provided. Theme Park Review is not responsible for any baggage or personal effects of any individual participating in the tour. Individual Travelers are responsible for purchasing a travel insurance policy, if desired, that will cover some of the expenses associated with the loss of luggage or personal effects.

Theme Park Review reserves the right to refuse service to anyone at anytime at our own discretion.

---

### Payment Instructions

Initial trip registration and first deposit is done via the TPR Store: <http://www.themeparkreview.com/store/>

Click on "TPR 2012 Trip Deposits"

After the first deposit, all remaining payments should be payable to "Theme Park Review" and sent to:

Theme Park Review

7512 Dr. Phillips Blvd.

Suite 50-273

Orlando, FL 32819 USA

**\*\*PLEASE NOTE NEW ADDRESS!**

Check or Money Order is preferred. Bank Wire Transfer and PayPal can also be arranged (email for details).

Questions? Email: [Elissa@themeparkreview.com](mailto:Elissa@themeparkreview.com)